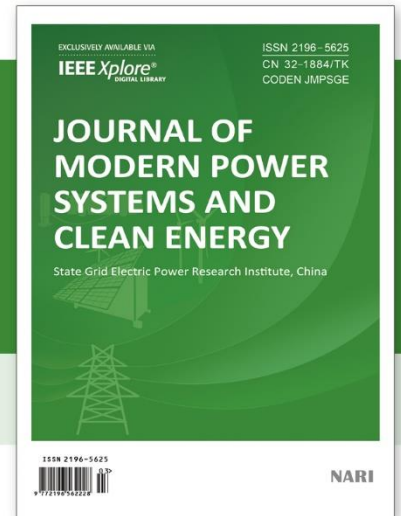


# MPCE Guidelines for Authors

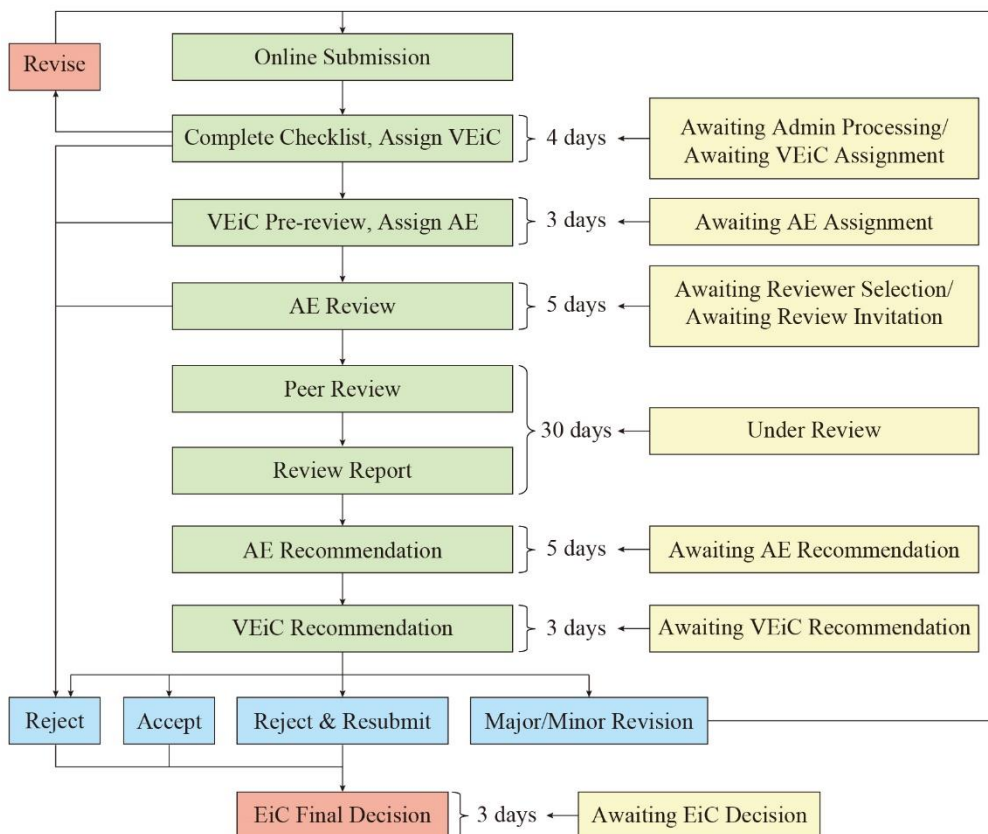
## 14 Weeks from submission to publication

CODEN JMPSGE ISSN 2196-5625(Print); ISSN 2196-5420(Online) CN 32-1884/TK



### Major Features

- This journal is 100% open access.
- All articles are published under Creative Commons licenses (either CCBY or CCBY-NC-ND) and the author retains copyright.
- Open access is provided through the payment of an article processing charge (APC) paid after acceptance, which is currently covered by SGEPRI.
- The articles in this journal are peer reviewed in accordance with the requirements set forth in the IEEE PSPB Operations Manual (Sections 8.2.1.C & 8.2.2.A).
- Articles will be screened for plagiarism before acceptance.
- Each published article was reviewed by a minimum of two independent reviewers using a single-blind peer review process. The detailed flowchart of manuscript processing is as follows.



## Scope of Papers

MPCE has an international authorship and a broad scope in modern power systems including, but are not limited to:

- Renewable power generation and clean energy technologies
- Distributed energy resources and storage
- Modern power system operation and planning
- Power system protection and automation in energy management systems
- Power system economics and markets
- Transmission technologies in modern power systems
- Active distribution networks and microgrid applications
- Modern power grid devices, sensors and wireless technologies
- Load management and customer participation
- Electric vehicles and electrification of transportation industry
- Cyber-physical systems and power system communication technologies
- Interdependency of electricity with other large Infrastructures
- Power system modeling and computational analyses

## Guidelines on High-quality Papers

- **Significance:** The specific problems/issues presented in the paper should be meaningful, timely, and of practical value and have some technical significance to deserve investigation; They should at least be useful to some audience (or to say they should not be a problem that only the author team faces and no one else would benefit for reading this paper).
- **Originality:** The paper should contain original contributions that are innovative and have a potential impact on academic research, industry application, or both. Originality will be made evident in the early parts of the paper, and the case is made by citing literature to describe the state-of-the-art and highlight the research gap (make sure the most of the related works are included in the list of references whereas excessive self-citations are discouraged), for example, and the introduction and aims and objectives will reflect this fact as well, as in the discussion of results and conclusions; For application papers, the importance, uniqueness and relevance of the problem addressed and the usefulness of the contribution for the practicing community is of great importance. It is also recommended to validate the techniques using data provided by the industry for such type of paper.
- **Rigor:** The research work conducted to support, validate, or demonstrate the paper's contribution shall have a certain degree of technical depth and scientific rigorousness. In other words, rigor should be evident from the meat of the paper – strong and extensive (i.e. substantial) datasets rigorously analyzed, and where relevant, marrying experimental, analytical and numerical work.

- **Effective Presentation:** The paper's texts and illustrations shall be able to communicate the contents effectively, the paper should be well structured, and the MPCE Journal Template should be followed for the formatting (available at: [http://www.mpce.info/ch/reader/view\\_news.aspx?id=20150519040134001](http://www.mpce.info/ch/reader/view_news.aspx?id=20150519040134001)). Quality of the English language is important, and this is to be carefully checked before the submission (American and British English are acceptable, but the mix of the two should be avoided). To promote equal opportunities, inclusive language is strongly recommended (the content should be free of any wording that could be understood as offensive on the grounds of race, gender, age, disability, health conditions, ethnicity, culture, and sexual orientation). Concurrent submissions to different journals are not allowed.

## **Types of Papers**

MPCE will consider 8 types of papers.

### **Type 1: Research Papers**

Research papers are expected to present innovative solutions, novel concepts, or creative ideas that can help to address existing or emerging technical challenges in the field of power engineering.

### **Type 2: Application Papers**

Application papers share valuable industry experiences in dealing with challenging technical issues, developing/adopting new standards, applying new technologies or solving complex problems. MPCE welcomes application papers that can have a significant impact on industry practices in the coming years.

**Example:** <https://ieeexplore.ieee.org/document/8939532>

### **Type 3: Hybrid Papers**

Hybrid Papers are considered to be the combinations of features of Type 1 and Type 2 papers

### **Type 4: Review Papers or Views**

Review papers or Views are expected to provide insightful and expert reviews, tutorials, or study cases on an important, timely and widely-interested topic in power engineering. Review Papers or Views are to be in-depth, critical analyses. Review Papers or Views may be undertaken on a broad subject area or on a very specific topic, and are expected to be more than just a survey of the literature accompanied by a long list of references. MPCE welcomes Review Papers or Views that present the state-of-the-art and the critical issues that have been solved and those challenges that remain unresolved.

**Example:** <https://ieeexplore.ieee.org/document/9275593>

### **Type 5: Visionary or Invited Papers**

The Visionary Papers or Invited Papers are designed for seasoned researchers or technical committees to share their visions on a significant trend or technical challenge facing the power industry or to present innovative or emerging ideas/concepts that may produce a wide range of



impacts. A paper of this type is intended to promote, influence or lead the research activities in the subject area.

### **Type 6: Working Group/Taskforce Papers**

Working Group/Taskforce Papers are prepared by WGs and TFs in the IEEE, IEC, CIGRE, or other professional bodies, which are working on topics relevant to the journal. There is a higher expectation of quality and the review process will be more rigorous.

### **Type 7: Short Papers or Letters**

Short Papers or Letters publishes short, high-quality reports of the very new developments and transformative ideas where authors would like to communicate with the community in a rapid manner.

### **Type 8: Errata**

Errata papers provide an option for the authors to make corrections to their papers published previously in the MPCE.

## **Reviewing Time Scale**

The objective of this journal is to publish high-quality papers within 14 Weeks from submission.

- The 1<sup>st</sup> round reviews for the majority of the papers should be returned within a 4-week time frame.
- For the 1<sup>st</sup> round reviews, reviewers can have 4 options:
  - (a) Acceptance.
  - (b) Minor revision: A minor revision should be completed within 21 days.
  - (c) Major revision: A major revision, should be completed within 45 days.
  - (d) Reject and re-submission: resubmission is allowed except that further substantial work is included and should be completed within 90 days as a new paper.
  - (e) Rejection.
- The 2<sup>nd</sup> round reviews for the majority of the papers should be returned within a 4-week time frame.
- For the 2<sup>nd</sup> round reviews, reviewers can have 3 options:
  - (a) Acceptance.
  - (b) Minor revision: A minor revision should be completed within 21 days.
  - (c) Rejection.

## **Plagiarism Policy**

According to the IEEE definition, plagiarism is the use of someone else's prior ideas, processes, results, or words without explicitly acknowledging the original author and source. Plagiarism in any form is unacceptable and is considered a serious breach of professional conduct, with potentially severe ethical and legal consequences.



A more detailed description of the IEEE Plagiarism Policy can be found in the PSPB Operations Manual, Section 8: <https://pspb.ieee.org/images/files/files/opsmanual.pdf>

## **Copyright**

All articles are published under Creative Commons licenses (either CCBY or CCBY-NC-ND) and the author retains copyright. The final accepted paper version can be archived by authors in their organizational repositories.

## **Research Data**

Authors are encouraged to share the data via the IEEE Data Port along with their papers.

## **Changes to Authorship**

During the process of revisions, this needs to get the approval of all the authors and the MPCE office. When papers have been accepted, no changes to authorships would be possible.

## **Some Tips to Avoid Unnecessary Delays in Your Paper Processing**

- Make sure that the MPCE templates (and the instructions therein) are strictly followed.
- Proofread the final PDF format of the paper (in the final stage of submission) and make sure that the PDF text is exactly as the original (all figures and equations are visible and not distorted). If necessary, make corrections to the original file and repeat the final PDF conversion.
- If your paper includes geographical maps, make sure that the use of the maps is granted/authorized.
- Try to avoid using low-resolution images/figures.

## **Length of Papers**

The length limitations of your paper are 12 pages (for Review and Views), 9 pages (for Original Paper and Discussion) and 5 pages (for Short Letter).

## **Paper Submission**

Paper submission website: <https://mc03.manuscriptcentral.com/mpce>

Paper template: [http://www.mpce.info/ch/reader/view\\_news.aspx?id=20150519040134001](http://www.mpce.info/ch/reader/view_news.aspx?id=20150519040134001)

## **Meet the Editor-in-Chief Team**

Editor-in-Chief  
Prof. Yusheng XUE



NARI Group Corporation (State Grid Electric Power Research Institute), China  
[xueyusheng\\_MPCE@sgepri.sgcc.com.cn](mailto:xueyusheng_MPCE@sgepri.sgcc.com.cn)

Senior Editorial Advisor  
Prof. Bikash PAL  
Imperial College London, UK  
[mpce-bikash@sgepri.sgcc.com.cn](mailto:mpce-bikash@sgepri.sgcc.com.cn)

Vice Editor-in-Chief  
Prof. Chi Yung CHUNG  
The Hong Kong Polytechnic University, Hong Kong, China

Vice Editor-in-Chief  
Prof. Antonio GOMEZ-EXPOSITO  
University of Sevilla, Spain

## **MPCE Task Force on Guidelines**

The Guidelines were developed by the MPCE Task Force between January and July 2022. The members of the MPCE Task Force for Guidelines for Editors, Reviewers, and Authors are:

Rabih Jabr, American University of Beirut, Lebanon

Xiao-Ping Zhang (Chair), University of Birmingham, UK

Junbo Zhao, University of Connecticut, USA

Bikash Pal (Advisor), Imperial College London, UK

Mevludin Glavic, Independent Researcher/Consultant, Bosnia and Herzegovina

Linquan Bai, University of North Carolina at Charlotte, USA

Ning Zhang, Tsinghua University, China

